

[Back](#)



ABERDEEN MUSEUM REVIEW

Volume 2, No. 3 June 1, 2003

OUR NEWSLETTER ~ A link to the past and present. ~

MEMORIES OF ABERDEEN

SCHOOL ACTIVITIES

When the middle of May arrived, activities at the old Aberdeen School built to a fever pitch.

May Day festivities, Junior-Senior banquets, proms, ball games and other athletic events filled the complex excitement. Preparations for graduation ceremonies were in top gear.

Donations to the Aberdeen Room Archives and Museum have conveyed stories, and many a nostalgic memory of those past days.

Mary-Lynne Thompson Livezey brought a photo of Helen Cronin sitting on the old school steps. How many of us can recall having "Miss Helen" as their first grade teacher! There were also May Day photos from 1947, with Doris Creswell as the May Queen, Carolyn Grier and Constance Ferrell as attendants and Mary-Lynne Thompson as one of the junior attendants.

When **Pat Cline** visited, we were looking at photos taken in 1942 by **John Denham** of many of his friends at AHS. We were very saddened to hear of John's death in Seattle recently. He will be remembered for his cheerfulness delivering messages for Western Union on his bicycle after school.

Mary Cronin Wolfe found a photo of the "athletic field," circa 1940, with a baseball game in full swing. (For those not familiar with that field, it is now Festival Park.) This is the best photo we have of the field in that time period. She also contributed photos of the moving of the printing press of the "Harford Democrat" from the old building on South Philadelphia Boulevard to its new home at 4 South Parke Street in 1955.



Aberdeen High School Circa 1940

There is also a photo of a concert at the USO building in the 1940s, and a pin from the USO at 58 North Parke Street. Many will recall how that building was a "home away from home" for many service personnel.

Howard King has contributed many more photos that he had taken over the years. One very interesting one is of the "Exodus Point" at APG for Christmas of 1973. He also brought a 10 cent military script which was a

military payment certificate in Korea in 1958. He also contributed a "Kids' Post Newspaper" with an article about Cal Ripken on Spanish baseball cards. There is also a brick from the recently demolished Chandler Building.

Craig Herud brought a slide rule that was used at the New Jersey School of Technology, passed from his father to him, and used at APG, along with a manual. He also brought a technical manual "Military Explosives." (Declassified)

Continued on page 2

continued from page 1

MEMORIES OF ABERDEEN

SCHOOL ACTIVITIES

Selma Wise brought coin saver cards from First Harford Federal and its successor Atlantic Federal (now Susquehanna Bank). There is also a clothing brush souvenir from City Cleaners at 22 Howard Street.

Chuck Baker brought 3 old wooden files that exactly accommodate the inventory of sketch notes and postcards of some 300 Aberdeen scenes available at the museum.

George Baker brought in the antique framed sketch of George Washington Baker, the founder of the canning industry in Aberdeen in 1867. This is a very significant addition to the museum because this gentleman initiated the very successful industry that was carried on by his 5 sons, as well as by many other families in Harford County in the last half of the 19th century. The portrait now is part of the canning display at the museum.

AnnaBelle Gay contributed a wooden train whistle that is now part of the railroad display. **Howard King** continues to find train schedules to add to the collection - the most recent from Conrail in 1977.

When we think that many attics, basements and desk drawers must surely be empty after the many donations we have received, many more continue to flow in, bringing so many memories with them.

ABERDEEN AND HARFORD COUNTY

APPRECIATE THE MILITARY

Aberdeen Proving Ground and the City of Aberdeen joined together for an Armed Forces Day celebration to honor those who have served in the U. S. military. The event was held at Ripken Stadium in Aberdeen.

Harford County has proclaimed the week of May 19, 2003, Military Appreciation Week in the county.

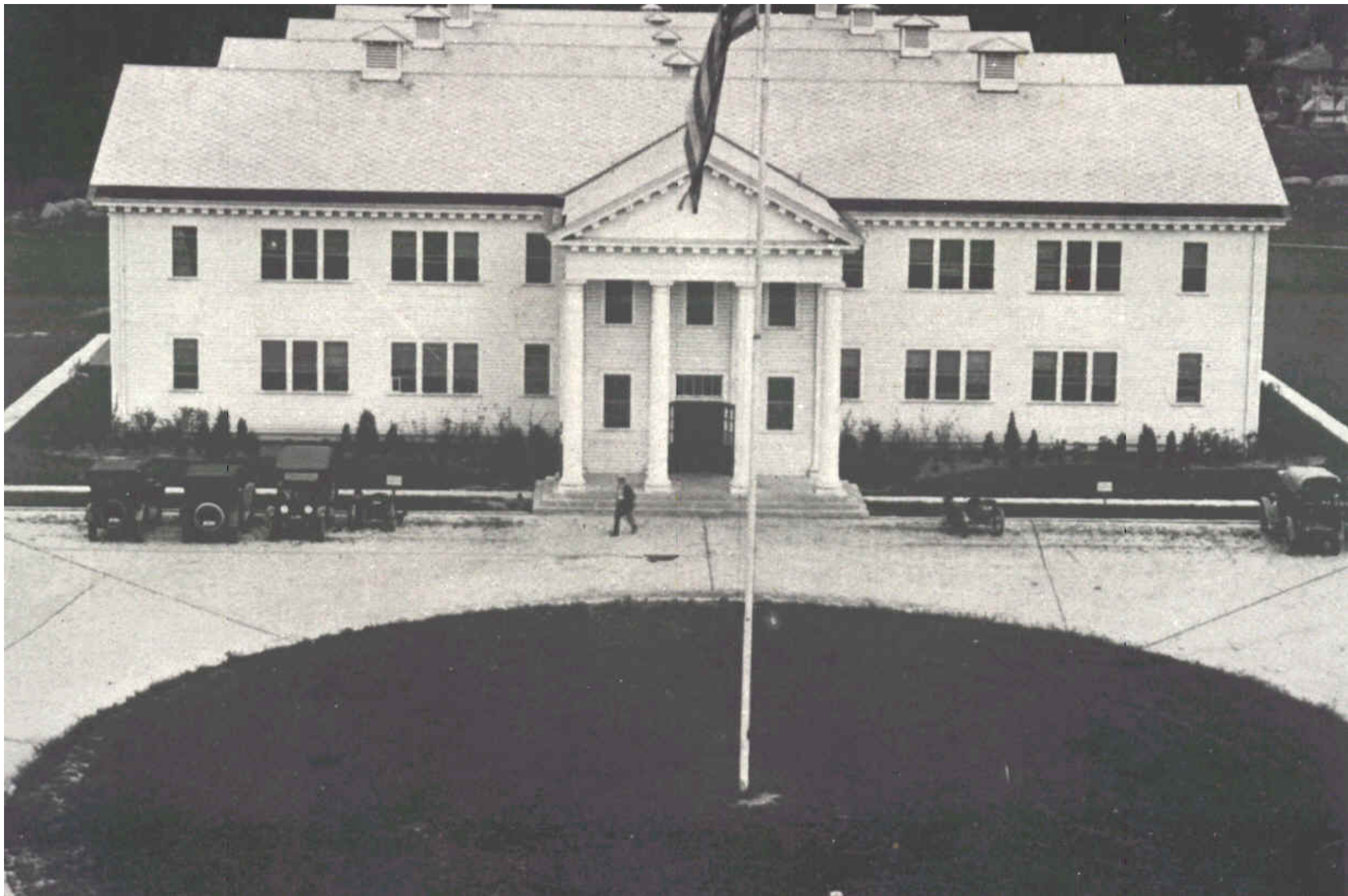
There were displays providing information about the organizations that support APG, at 4 p.m.. Then at 6 p.m. the entertainment began, it included many local and military groups. The evening culminated with a concert by the 389th Army Band, followed by fireworks.

A video of the celebration was taped throughout the day, and the final version will be sent to units that are deployed overseas.

The exciting event was a celebration of America's military, past and present.

This year marks the 87th year for the United States Army's Aberdeen Proving Ground. Armed Forces Day was established in 1949 to celebrate the military as a single unit. This observance on May 17, and all of next week will show the appreciation the City of Aberdeen, and Harford County have for the harmonious relationship they have for the military facility, and the economic benefits that have resulted.





APG Headquarters Building circa 1919

What does Aberdeen Proving Ground mean for Harford County ?

Can any of us imagine a Harford County without the APG ?

Anyone born since 1917 never knew the county without that facility. It was in that year that the federal government purchased the farm lands on the western shores of the Chesapeake Bay that some of the old families in the area called home, and the growth that resulted was phenomenal.

The U. S. Housing Corporation in east Aberdeen was incorporated into the Town of Aberdeen in 1921, and because of added payrolls both the Aberdeen Proving Ground and Edgewood Arsenal, there was a need for modern sewer and water installation.

The public schools in the area increased enrollment with children of the Army and civilian workers. With the turn of world events and war in Europe in 1939, the proving ground again expanded and additional land was purchased, and the testing of arms and ammunition increased. There was a building boom for housing at the post.

In the Town of Aberdeen, (know as "Town" until 1992 when Aberdeen became a "City"), housing became scarce and Public Housing Authority constructed Baldwin Manor, North Deen, Swan Meadows and later apartments were constructed at Chesapeake Gardens.

In 1941, with the attack on Pearl Harbor, the United States was also at war, and again the APG expanded with civilian personnel including mathematicians, engineers, physicists and other scientists. There were also the military families in the area - not only in Aberdeen, but in Bel Air and Havre de Grace, as well.

Private apartment units, housing

Continued on page 3 Continued from page 2

ABERDEEN AND HARFORD COUNTY

APPRECIATE THE MILITARY

developments and motels and restaurants were built to accommodate the added residents and visitors to the Army Post.

From 600 people in 1900, population increased to 15,000 in Aberdeen, and about 30,000 in 1976 (including all of Aberdeen Proving Ground). Roads and railroad crossings were improved to service the area.

Today, APG continues to be Harford's largest single employer, and is a thriving community unto itself. More than half of the thousands of civilian employees, and both military and civilian retirees live in Harford County.

There is a very wide diversification of workers at the facility, including engineers and mechanics, painters and electricians, scientists and secretaries.

There are also contracts for many other services going to janitorial and food companies and for goods and materials.

Many millions of dollars are contributed to Harford's economy because APG is here. Not only that, but many federal employees and retirees sit on local boards in Aberdeen, Bel Air and Havre de Grace. Retirees continue to live in Harford and start their own businesses and second careers.

Because of the close relationship between the scientific community at APG and Aberdeen, the schools in Aberdeen benefit. It has just been released that funding is now in place for the magnate school for math and science at the new Aberdeen High School. Think of that benefit for Aberdeen and Harford!

Can we imagine Harford without APG - would we want to? What is good for everyone in Harford is also good for the State of Maryland!

In honor of our "Good Neighbor APG," the Aberdeen Room Archives and Museum has a special military display in the front windows of the museum for all to see from now through Memorial Day and the Fourth of July.

For visitors to the Aberdeen Room, there will be copies of "The First Days," that tell the history of Aberdeen Proving Ground with old pictures of the first flag flown, and new buildings under construction. Research materials with information about Harford Countians who served in both World War I and World War II will also be available.

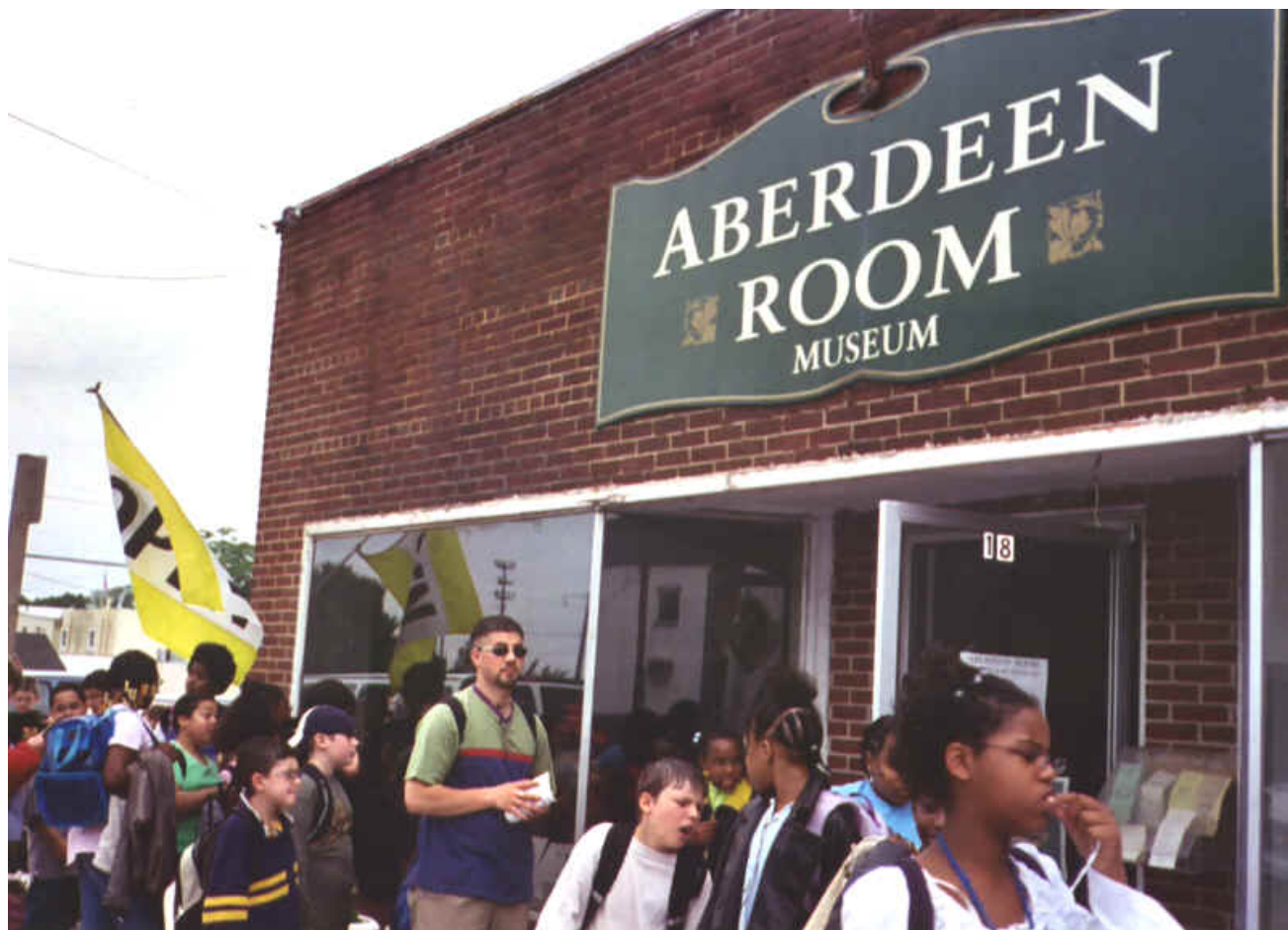
Come and learn more about how Aberdeen Proving Ground came to be, and the many who served, at the museum at 18 Howard Street in Aberdeen. For information call 410-273-6325, or

e-mail at sayhello@aberdeerroom.com

We should all be thankful that we enjoy the advantages that Aberdeen Proving Ground contributes!

STUDENTS FROM HALLS CROSS ROADS

ELEMENTARY VISIT THE MUSEUM







*Fifth Grade Classes from Halls Cross Roads Elementary visit the
Aberdeen Room to see their communities heritage.*

[Back](#)